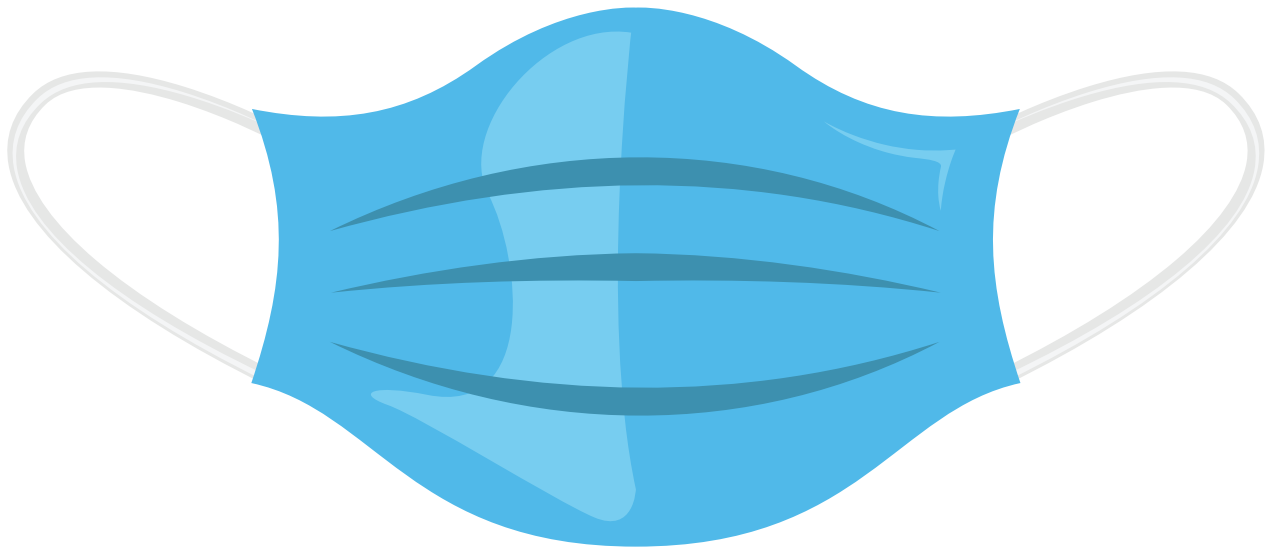


FACE COVERING/MASK REQUIRED

Protect each other.

Exceptions include students in Kindergarten, and those who are unable to wear a face covering/mask as a result of a medical condition or a disability.



Direction issued by the Ministry of Education for the purposes of regulations originally made under the Emergency Management and Civil Protection Act and continued under the Reopening Ontario (A Flexible Response to COVID-19) Act, 2020.

1-800-660-5853
www.healthunit.org



EOHU
Eastern Ontario
Health Unit



BSEO
Bureau de santé
de l'est de l'Ontario

1-800-267-7120
www.eohu.ca