

Population Health Department

2023 Year End Report



PoPH Department: Our Focus

- We focus more on the communities we live, eat, drink, learn, work and play in.
- We work mostly with groups, municipalities, schools, workplaces, operators (for example retail, restaurants, and institutions)
- Two divisions:
 - Healthy People Vibrant Communities
 - Community Health Protection



CHP Environmental Health

Indicators	2023
# of Food Premises Inspections completed	1128*
# of Food Premises By Risk Level (High, Moderate, Low) 1345 total food premises	220 Highs 680 Moderates 438 lows
% of food premises inspected	Year Round High: 68.2%* Year Round Mod: 47.5%*
# of Food Handler Courses Provided	11
# of Participants in Food Handler Courses	427
# of Participants achieving their Food Handler's certificate	426
# of Food Handler Exams Facilitated	68

* Numbers valid as of Dec 1, 2023. We are unable to give a complete report due to inspection system transition



Leeds, Grenville & Lanark District

HEALTH UNIT

Your Partner in Public Health

CHP Environmental Health

Indicators	2023
# of Adverse Water Quality Incidents	147 (2022: 91)
# of Boil Water Orders Issued	7
# of Boil Water Advisories Issued	5
# of Public Health Notices Issued (Sodium Health Notice)	1
# of Public Pool inspected as per OPHS	88 (2022: 75)
# of Re Inspections for Class A, B and C Pools	54 (2022: 31)
# of Public Spa Inspected as per OPHS	7= 100% (2022: 13)
# of Beaches Sampled	23 beaches sample 11 wks - 253



CHP Emergency Management

- Respond to and recover from emergencies with public health impacts (with internal and external implications)
- Collaborate with local municipalities on emergency response activities

Indicators	2023
# of Municipal Emergency Response Plans Reviewed	0
# of Table Top Exercise Participated In	2
# of times public health participated in an local emergency event	0



CHP Infectious Disease

Management of Infectious Diseases – Sporadic and Outbreaks

Indicators	2023
# of Enteric Outbreaks	37 (26 Childcare Settings, 5 Retirement homes, 8 Long-term care homes, 1 Hospital)
# of Salmonella Outbreaks	0
# of E-Coli Outbreaks	0
# of Sporadic Disease of Public Health Significance (within PHI Scope)	Enteric and Foodborne Disease investigations: 85 Lyme- 478 Anaplasmosis- 38 Babesiosis- 4
# of Personal Service Setting inspections	158/270- 59%
# of Childcare Centre Inspection	37/41 – 90%
# of IPAC Complaints Investigated and type of setting	1- Dental office 3 PSS

CHP Infectious Disease

Prevention and Management of Vector-Borne Diseases

Indicators	2023
# of Mosquito Pools test positive for West Nile Disease	0 of 145 pools (910 mosquitoes)
Positive Confirmation of bacteria causing infection/disease in local tick population	Anaplasma Borrelia burgdoferi
# of media messages shared on tick and mosquito bite prevention	6 MR (7 SM)



Leeds, Grenville & Lanark District

HEALTH UNIT

Your Partner in Public Health

CHP Infectious Diseases

Prevention and Management of Zoonotic Diseases

Indicators	2023
# of Animal Bites Investigated	546 (352 dogs, 118 cats, 46 bats, 30 other animals +18% from 2022)
# of Animal Bites Referred to other PHUs	120
# of Animals Vaccinated at Low Cost Rabies Clinic	Coordination activity deferred in 2023 due to staffing restraints
# of Rabies PEP delivered by Community Para Medicine Program	83
Total Numbers of Rabies PEP Distributed	31*

* We are unable to give a complete report due to inspection system transition



CHP Land Control

- The Health Unit sunsetted the program as of October 1st, 2023
- All information has been securely shared with the new entities.
- Staff continue to offer support to these entities to share knowledge and experience.



CHP 24/7 Call Coverage

- Duty Desk: Phone line supported by a PHI to help answer general questions related to Environmental Health programs (Monday – Friday 8:30 am – 4:30 pm)
- MOH/Manager 1st on call Mon- Fri, 2nd on call Sat and Sun and Stats
- On Call PHI Coverage: After hours coverage from 4:30 pm on Friday to 8:30 am on Monday (also on statutory holidays)

Indicators	2023
# of Duty Desk Calls	2186 (2022:2137)
# of Total After Hour Calls	557 (2022:482)



Healthy Environments and Climate Change

Indicators	2023
# of Heat Alerts Posted	3 MR, 2 INT 6 SM
# of Cold Alerts Posted	2 MR, 1 INT, 4 SM
# of Poor Outdoor Air Quality Advisories Posted	1 MR, 10 SM (2022:0)
# of Extreme Weather Alerts	5 MR, 2 INT
# of Algae Reports Posted	3 MR, 1 SM, 1 community presentation
# of Municipal Plans Reviewed	11
# of Plans that Accepted Comments	Unable to assess
# of Radon Kits Sold	128 (2022:28)
# of Complaints	0
# of Media Messages Shared including climate changes awareness messages	104 SM (2022:34)
MR (media release) INT radio/TV interview), MC (Media Call) SM (social media posts)	

HPVC: Health Equity

Indicators	2023
# of updated/new Health Equity Resources	-Implementation of revised HE Tool -Nutritious Food Basket Costing completed and resource developed -Living Wage determined and shared with community partners and on media platforms
# of resources reviewed using the tool	30 (2022:13)
# of staff trainings	10
# of community meetings/consultations	5 (2022:2)
# of media posts, interviews, articles	1 interview 109 Facebook posts 64 Tweets 13 Instagram 8 radio ads 1 media release

HPVC: Healthy Growth & Development

Indicators	2023
# of Triple P sessions	2 in-person/ 12 participants 13 parents attended Cafes
# of Triple P online codes distributed	41 (0-12, Teen, Fear-less)
# of Triple P promotional events	2 in-person event, distributed 700 promotional items
# of social media posts	78 Facebook 55 Instagram
# of Roots of Empathy facilitators supported to deliver a program	12 new instructors trained 17 programs running



Leeds, Grenville & Lanark District

HEALTH UNIT

Your Partner in Public Health

HPVC: School Health (Healthy Youth)

Indicators	2023
# of school board consultations	99
# of workshops provided to students	314 (vaping, hand hygiene, PALS, sexual health Q&As, Party Smart, immunization, IPAC)
# of peer to peer events	29 (2022:1)
# of curriculum consultations	69 (2022:20)
# of training sessions for school staff	15 (2022:20)
# of parent meetings/presentations	35 (2022:9)



Leeds, Grenville & Lanark District

HEALTH UNIT

Your Partner in Public Health

HPVC: School Health (Healthy Youth)

Indicators	2023
# of initial assessment meetings with principals	33 (2022:3)
# of immunization clinics supported	61
# of resources developed/adapted/adopted	95
# School media	8 Facebook 4 Tweets 1 Instagram
Community Events	1 Asset Builder event with EKIOC (2 media releases, 1 radio interview, 1 TV interview, 3 SM posts)



HPVC: Chronic Disease Prevention & Well-Being

Indicators	2023
# of nutrition media	43 radio and 2 TV interviews 40 newspaper articles 2 media releases 40 newspaper articles submitted 64 Facebook/40 Tweets/2 Instagram
# of HBHM advocacy letters	4 (2022:0)
# of resources reviewed with HBHM checklist	21
# HBHM media	4 radio interviews 4 newspaper articles submitted 8 Facebook/5 Tweets
# of consultations with municipalities and community partners to increase access to nutritious food and promote positive eating behaviours	14

HPVC: Chronic Disease Prevention & Well-Being

Indicators	2023
# of Physical Activity media	25 Facebook 13 Tweets 1 Instagram
# of Sedentary Behaviour media	1 Facebook 1 Tweet
# of consults/resources shared with municipalities and partners to increase access to physical activity, recreation opportunities and create supportive environments	36 (2022:36) 16 consultations on Age-Friendly Older Adult Review Released
# of tanning salon complaints	0
# Menu Labeling Inspections (new and re inspections)	6/9 67% completion

HPVC: Substance Use and Injury Prevention

Indicators	2023
# of Partnerships involved that address topics relating to injury prevention and/or substance use	<ul style="list-style-type: none"> -MDS committees: 3 -Planet Youth Steering Committee and Youth Engagement: 2
# of Injury Media	<ul style="list-style-type: none"> 34 Facebook posts 25 Tweets 3 Instagram
# of Substance Media	<ul style="list-style-type: none"> 6 media releases 2 interviews 59 Facebook posts 34 Tweets 5 Instagram
# of Presentations, workshops and collaborations with municipal, school and community Partners	<ul style="list-style-type: none"> 16 vaping and tobacco 15 Planet Youth Engagement

HPVC: Substance Use and Injury Prevention

Indicators	2023
% of Tobacco and Vape Vendors Inspected for SFOA Display and Promotion requirements	98% of Tobacco vendors 99% of Vape vendors
% of Tobacco and Vape Vendors Compliant with Youth Access Inspections	74% (45% of vape vendors completed)
# of Specialty Vape Shops & Tobacconists	18 Specialty Vape Shops 1 Tobacconist
# of warnings/charges	242 warnings/16 charges
# of consultations with municipalities re: policies/bylaws	4 related to alcohol bylaw



2023 Year in Review

Susan Yates, Director
Jennifer Adams, Manager
Cathy DelMei, Manager
Catherine Robinson, Manager

February 22, 2024



Leeds, Grenville & Lanark District

HEALTH UNIT

Your Partner in Public Health

CLINICAL SERVICES TEAM



*Making a difference
one person at a time*

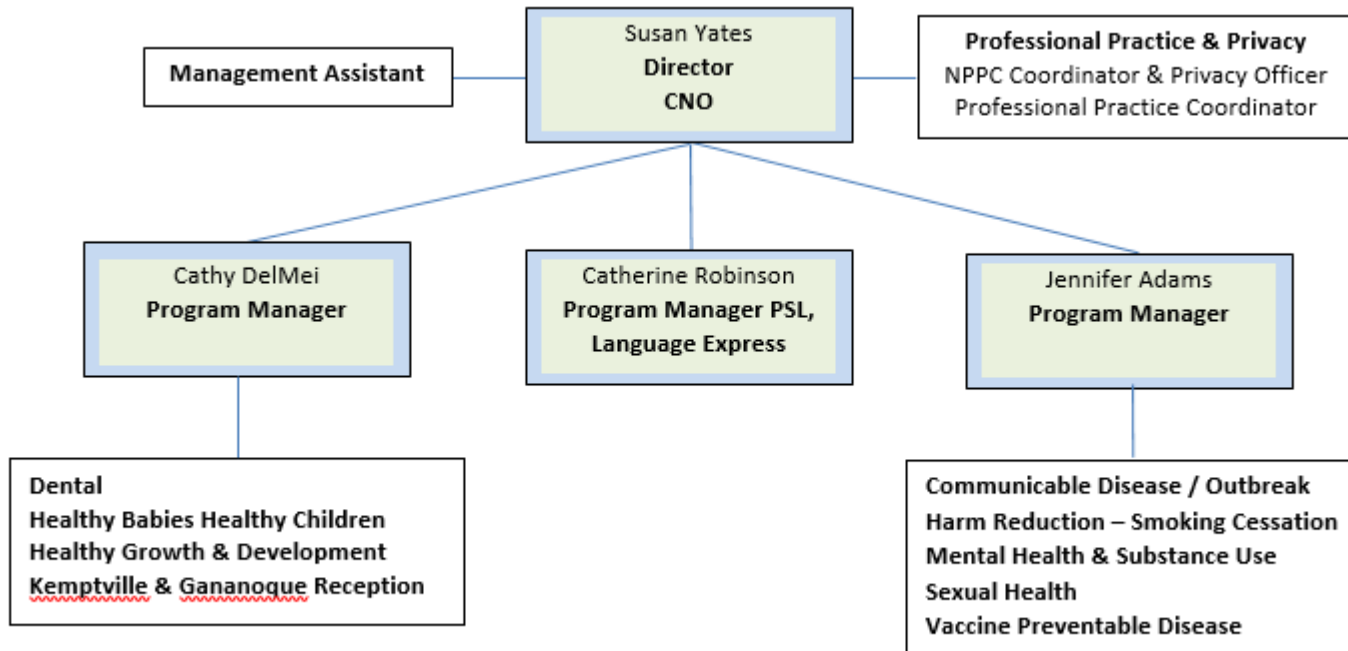


Leeds, Grenville

HEALTH UNIT

Your Partner in Public Health

Clinical Services Department – Organizational Chart



Clinical Services Overview

Clinical Services strives to:

- provide timely localized detection and intervention of provincially funded vaccine preventable diseases to children and adults
- reduce transmission of infections and communicable diseases
- partner with clients and with community partners to reduce substance use and promote mental health and well-being
- partner with clients, families, and community partners to support best possible health outcomes from preconception to conception and across the family life cycle



Leeds, Grenville & Lanark District

HEALTH UNIT

Your Partner in Public Health

Clinical Services & CNO

Our OPHS Programs:

- Infectious and Communicable Diseases
 - ✓ Sexual Health
- Healthy Growth & Development
 - ✓ Dental
- Healthy Babies Healthy Children
- Immunization

- Substance Use and Injury Prevention Standard
 - ✓ Smoking Cessation
 - ✓ Harm Reduction

MCCSS Sponsored Program:

- Preschool Speech & Language

CNO Responsibilities:

- Professional Practice
- Privacy



Foundational Standards Professional Practice



Leeds, Grenville & Lanark District

HEALTH UNIT

Your Partner in Public Health

2023 Professional Practice & Privacy

Effective Public Health Practice

- Foster relationships with academic/research partners and others to support learning and a culture of excellence in professional practice and safety while striving towards the best possible person/population-centred care experience and outcomes

2023-2024 Areas of Focus

- Implementing the *unique* Interprofessional Practice Framework
 - Mentorship, preceptorship
 - Best Practice Spotlight Organization official re-launch and visit from RNAO CEO Dr. Doris Grinspun
 - Clinical education/training
- Alignment to strategic plan
 - Support to programs models of care and service delivery
 - Review practice/privacy documents
- Academic/research partnerships and increasing student placements
- Continued work to assess compliance with privacy legislation



Services Direct to Clients

Catherine Robinson



Leeds, Grenville & Lanark District

HEALTH UNIT

Your Partner in Public Health

Language Express

Preschool Speech & Language Program

- Birth – JK
- Family-centred model that focuses on building capacity in parents and caregivers
- 100% funded by MCCSS
- LGLDHU = Lead Agency
- 11 SLPs, 4 CDAs, and 2 AAs work for the Health Unit or one of three subcontracted partner agencies



LANGUAGE EXPRESS
Preschool Speech & Language Services System
of Lanark, Leeds & Grenville



Leeds, Grenville & Lanark District

HEALTH UNIT

Your Partner in Public Health

Language Express

Preschool Speech & Language Program

	Apr 2022 – Mar 2023	YTD Apr 2023 – Dec 2024
New Referrals	423	301
Children Served	763	721
Average Age at Referral	31 months	31 months
Average Wait time to Assessment	27 weeks	30 weeks

We help with:

- Speech
- Language
- Fluency
- Voice
- Late talkers
- Social communication
- Autism Spectrum Disorder
- Permanent Hearing Loss
- Other diagnoses such as cleft palate, developmental delay, etc.
- Delayed emergent literacy skills



Leeds, Grenville & Lanark District

HEALTH UNIT

Your Partner in Public Health

Language Express Preschool Speech & Language Program



Strengths and Successes

- Our team of skilled and compassionate professionals is our greatest strength
- Consistently positive feedback from parents
- Flexible, family-centred service model to reduce barriers
- Online screening and referral
- “Tier 1” services to support families as early as possible
- Community engagement

2024 Areas of Focus

- Recruitment and Retention
- Tier 1 Services
- Waiting list management
- Implementing the *new PSL and Children’s Rehabilitation Guidelines, including changes to JK services*
- Transportation, technology, family mental health and other barriers to accessing service

Services Direct to Clients

Cathy DelMei



Leeds, Grenville & Lanark District

HEALTH UNIT

Your Partner in Public Health

Healthy Growth and Development

- Prenatal Education
- Infant Feeding Support
- Registered Dietitian Support
- Growth and Development Assessment/Monitoring
- Parenting Support



Leeds, Grenville & Lanark District

HEALTH UNIT

Your Partner in Public Health

Healthy Growth and Development

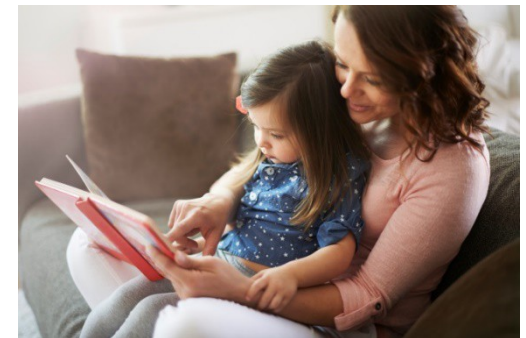
Unique views of babies/children webpage	6,211
Infant Feeding Clinic visits	692
Prenatal education participants	148
Baby Talk Group participants	294 families
Canadian Prenatal Nutrition Program participants	121 families



Healthy Babies Healthy Children Home Visiting Program

- For families with young children
- Delivered in the home by an PHN and Peer Support Worker

Postpartum screens completed	1103
Postpartum screens with risk factors identified	346
In depth assessments completed	146
Families receiving home visiting services	103



Dental

- Ontario Seniors Dental Care
- First Year, First Visit
- Preventative services
- School based screening and fluoride varnish
- Emergency Dental Treatment Fund
- Education and Oral Health Promotion
- Community water fluoridation monitoring
- Navigation support for provincially funded dental programs



Dental

Students screened	4391
Number of students screened with decay	1133
Number of students in urgent need of treatment	34
Number of seniors enrolled in OSDCP	847



Services Direct to Clients

Jennifer Adams



Leeds, Grenville & Lanark District

HEALTH UNIT

Your Partner in Public Health

Infectious and Communicable Diseases Prevention and Control

- Management of cases, contacts and outbreaks of respiratory and blood borne infections
- 836 total cases (excludes COVID/Influenza infections)
- Closely monitoring several diseases as we move into 2024;
 - iGAS
 - IMD (Invasive Meningococcal Disease)
 - Measles



Infectious Diseases – COVID-19 and Influenza

LGL – PHU Follow up	2022	2023
Lab confirmed COVID/Influenza cases followed	9776	2497
Number of COVID/Influenza outbreaks managed	169	82
Number of DOPHS-related COVID deaths	80	41
Hospitalized COVID cases	345	218
ICU COVID Admissions	79	28



Infectious Diseases – Respiratory

		2019	2020	2021	2022	2023
Other Diseases	ADVERSE VACCINE EVENT	18	15	11	11	
	CARBAPENEMASE-PROD ENTEROBACTERIACEAE - All	4	2	5	5	5
	ENCEPHALITIS/MENINGITIS	6	1	3	3	3
	MONKEYPOX				2	
	Total	28	18	19	21	8
Respiratory Diseases	INFLUENZA	106	75		554	49
	GROUP A STREPTOCOCCAL DISEASE, INVASIVE	6	5	10	8	37
	LTBI	9	14	6	9	12
	LEGIONELLOSIS		1	3	2	2
	TUBERCULOSIS PERIPHERAL LYMPHADENOPATHY	1		1		
	BLASTOMYCOSIS	1				1
	TUBERCULOSIS OF INTESTINES, PERITONEUM AND MESENTE..		1			
	Total	123	96	20	573	101



Leeds, Grenville & Lanark District

HEALTH UNIT

Your Partner in Public Health

Immunization Standard

- To reduce or eliminate the burden of vaccine preventable diseases through immunization
- Includes prevention, management and reporting of cold chain incidents and vaccine wastage
- Multiple Protocols and Acts for surveillance, administration and response to Adverse Effects Following Immunization (AEFI)



Publicly Funded Vaccine (Routine vaccines, ISPA – related vaccines and High Risk Vaccines)

	Vaccines Administered in our Health Unit Clinics (including Sexual Health Clinics)	Vaccines Administered in Schools as part of the ISPA Protocol
Total Number of vaccines Administered	3083	10104
Total Number of Clients	1431	3544
Total Number of Clinics Ran	251	95



Leeds, Grenville & Lanark District

HEALTH UNIT

Your Partner in Public Health

Seasonal Vaccines

COVID vaccines administered by each Health Unit Site

- 4536 doses of COVID were administered
- Continued to move away from providing vaccine to the public in the Fall of 2023
- Focused on children 12 years and under, children and adults requiring primary series for employment and school, complex and high risk adults and Novavax
- Supported primary care and pharmacies during initial surge of fall boosters by providing adult boosters for those
- Continued provision of seasonal vaccines through outreach to hard to reach and vulnerable populations



Substance Use and Injury Prevention Standard

Comprehensive Tobacco Control

- Tobacco, Vapour and Smoke Guideline, 2021
- Tobacco, Vapour and Smoke Protocol, 2021
- CS Dept responsible for Cessation Services for individuals and policy support for populations

Substance Use

- Substance Use Prevention and Harm Reduction Guideline, 2018
- Includes alcohol, cannabis, opioids and other drugs
- CS Dept responsible for harm reduction services for individuals and communities



Tobacco Cessation Services

- 144 enrollments into the Stop program
- 950 Stop program appointments
- Wait time for service is 2.1 days
- 19% of referrals from Health Care Providers
- 27% of referrals from our Sexual Health Team
- Smoking Cessation Coordinator successfully completed the Certified Tobacco Educator exam



Harm Reduction Substance Use and Addictions Program

Smart Work Program (Safe Supply Programming)

- 18 sites across LGL
- 6390 visits (2022)
- 1,986 new contacts

Supplies distributed:

- Safe injection equipment
- Safe inhalation equipment
- Safe snorting equipment
- Drug checking strips
- Wound care/basic needs supplies

Harm Reduction Program Enhancement

- 92 overdose reports
- 13 confirmed fatalities
- 29 suspected fatalities
- 588 naloxone kits distributed
- 58 clients seen during outreach from Sept to Dec, ranging in age from 18 to 65



Sexual Health Program

- Data collection, monitoring and reporting
- Case management, contact tracing and outbreak management
- Health promotion regarding healthy sexual behaviours
- Sexually Transmitted Infection (STI) testing and treatment
- Point of Care Testing for Syphilis
- Get a Kit



Sexual Health Program

		2020	2021	2022	2023
Sexually Transmitted Infections (STIs)	CHLAMYDIAL INFECTIONS	319	275	316	345
	HEPATITIS C	45	44	39	69
	GONORRHOEA (ALL TYPES)	31	47	58	52
	SYPHILIS, OTHER	6	15	11	24
	SYPHILIS, LATENT		2	8	7
	HEPATITIS B	1	4	4	4
	HIV	1	3	1	1
	HEPATITIS B, CHRONIC	1			1
	SYPHILIS, INFECTIOUS		1		
	AIDS				1
	Total	404	391	437	504



Leeds, Grenville & Lanark District

HEALTH UNIT

Your Partner in Public Health

Questions?



Leeds, Grenville & Lanark District

HEALTH UNIT

Your Partner in Public Health

2023 in Review: Corporate Services Department

- Shani Gates, Director, Quality, Information, and People Services
- Ginette Denford, Director, Finance and Administration

Board of Health: February 22, 2024

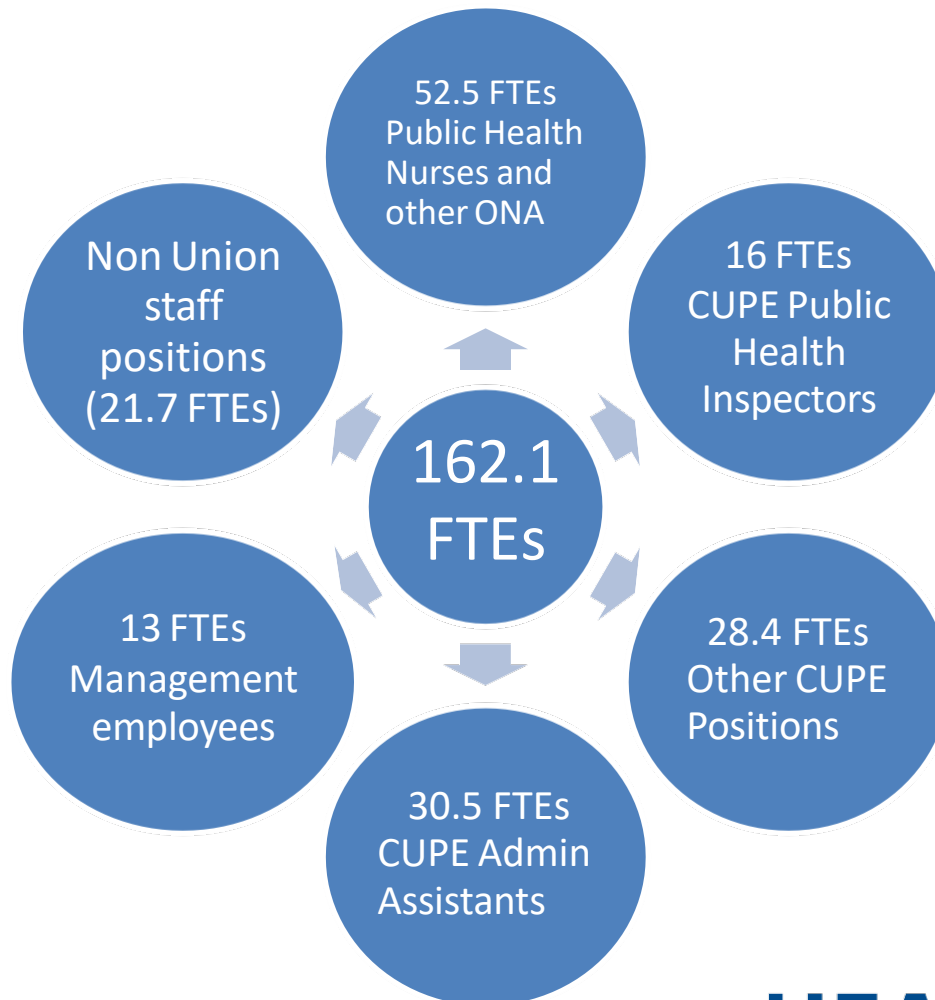


Leeds, Grenville & Lanark District

HEALTH UNIT

Your Partner in Public Health

2023 Workplace Snapshot



Recruitment and Selection Indicators

Indicator	2022	2023
# Internal Postings (Internal Movement)	CUPE 31 ONA 45	CUPE 48 ONA 45
# New Hires (External)	19	21
# Exiting the Organization (retirement/resignation/termination)	21	31



Benefits Usage Stats

Indicator	2022	2023
Sick Time – Total Hours Used	8,458 (4.6 FTE'S)	12,103 (6.65 FTE's)
STD Referrals	10	12
LTD Referrals	0	3
EFAP Usage	33 New Cases	16 New Cases*

*April 2023 – December 2023

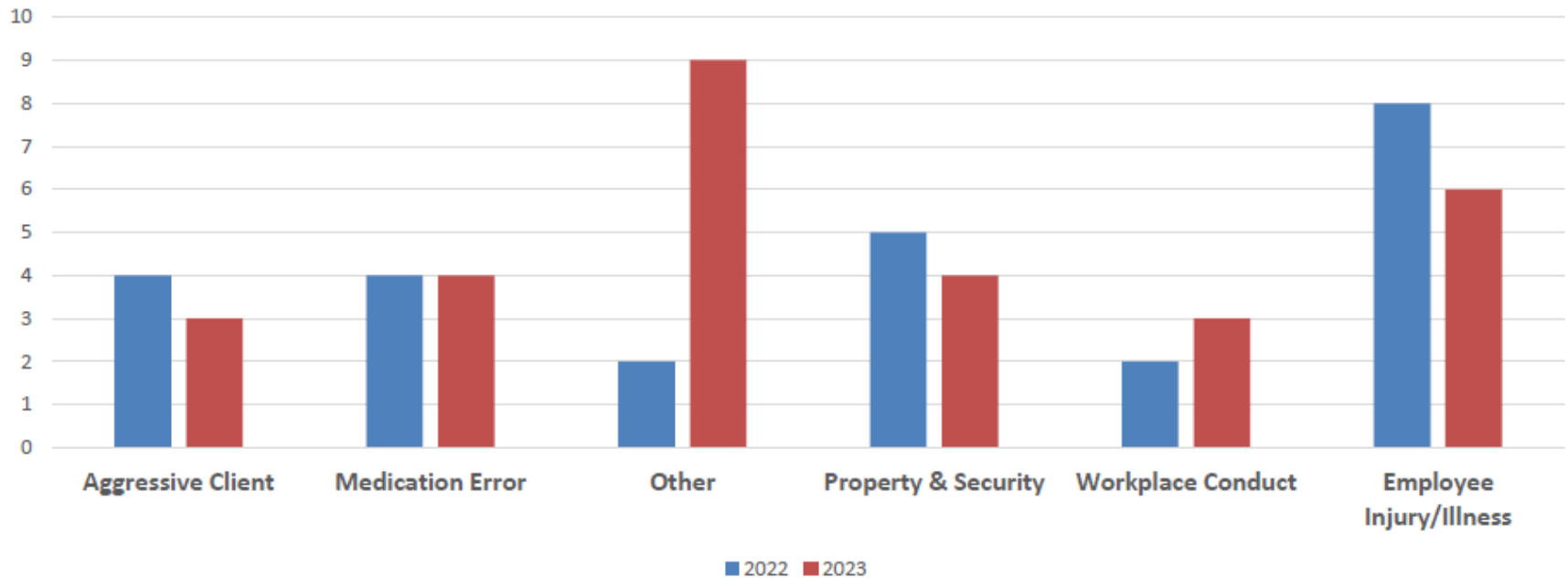
Mental Health at Work

- Received Gold certification with Excellence Canada
- Held 10 meetings with our MH@W Steering Committee, comprised of 22 staff and management champions
- Regular emails to staff with mental health and well-being information, tools and tips
- Guarding Minds at Work survey completed
- 45 employees attended training
- 130 employees took self-care days offered
- Variety of social events to support connection
- 160 employees attended 2 All Staff Days
(June and September)



Incident Reports

Incident Reports Employee Injury/Illness



Health Intelligence Team Stats

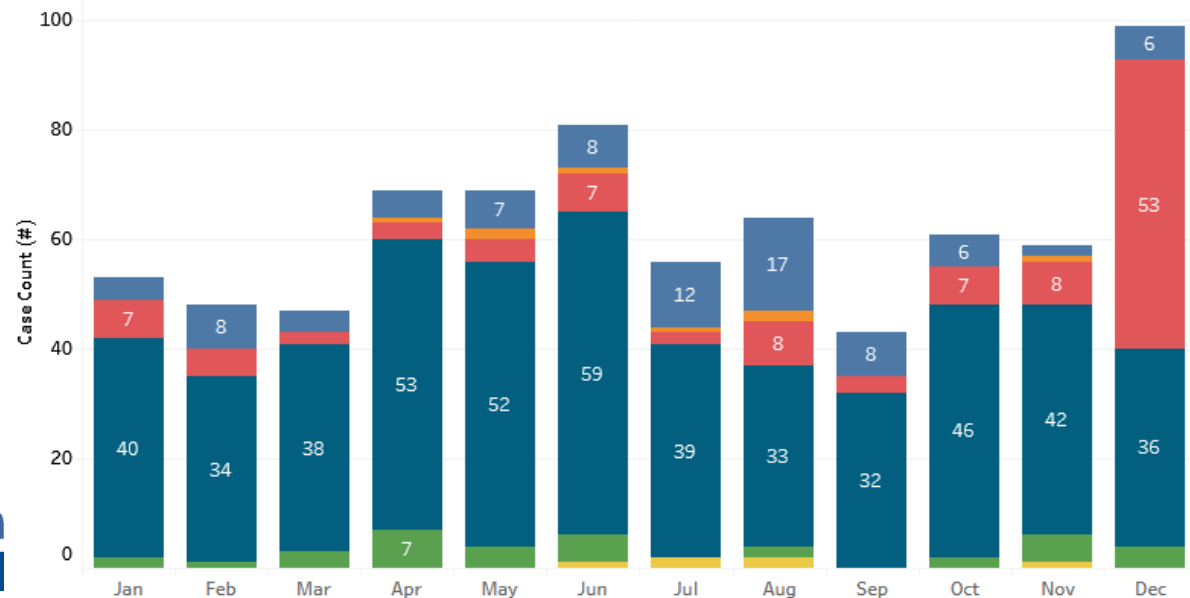
Indicator	2023
Surveillance Dashboards	19
Data Requests	32
Planning & Evaluation Requests	21
Planning & Evaluation Products	37

Annual DOPHS Trends by Disease Group & Year: 2023

Select Year

2023

- Enteric & Food-Borne Diseases
- Other Diseases
- Respiratory Diseases
- Sexually Transmitted Infections (STIs)
- Vaccine Preventable Diseases (VPD's)
- Vector-Borne & Zoonotic Diseases



Communication Stats 2018-2023

	2019	2020	2021	2022	2023
Website Unique Visitors	254,598	1,957,364	4,523,892	1,082,835	688,662
Webmail Submissions	518	1,884	5,577	1,706	1,102
Facebook Followers	2,607	8,263	13,035	13,288	16,137
X (Twitter) Followers	617	1,524	3,505	3,529	3,734
Instagram Followers	-	-	544	618	677
Media Inquiries			565	239	98

FACEBOOK:
LGLHealthUnit

TWITTER:
@LGLHealthUnit



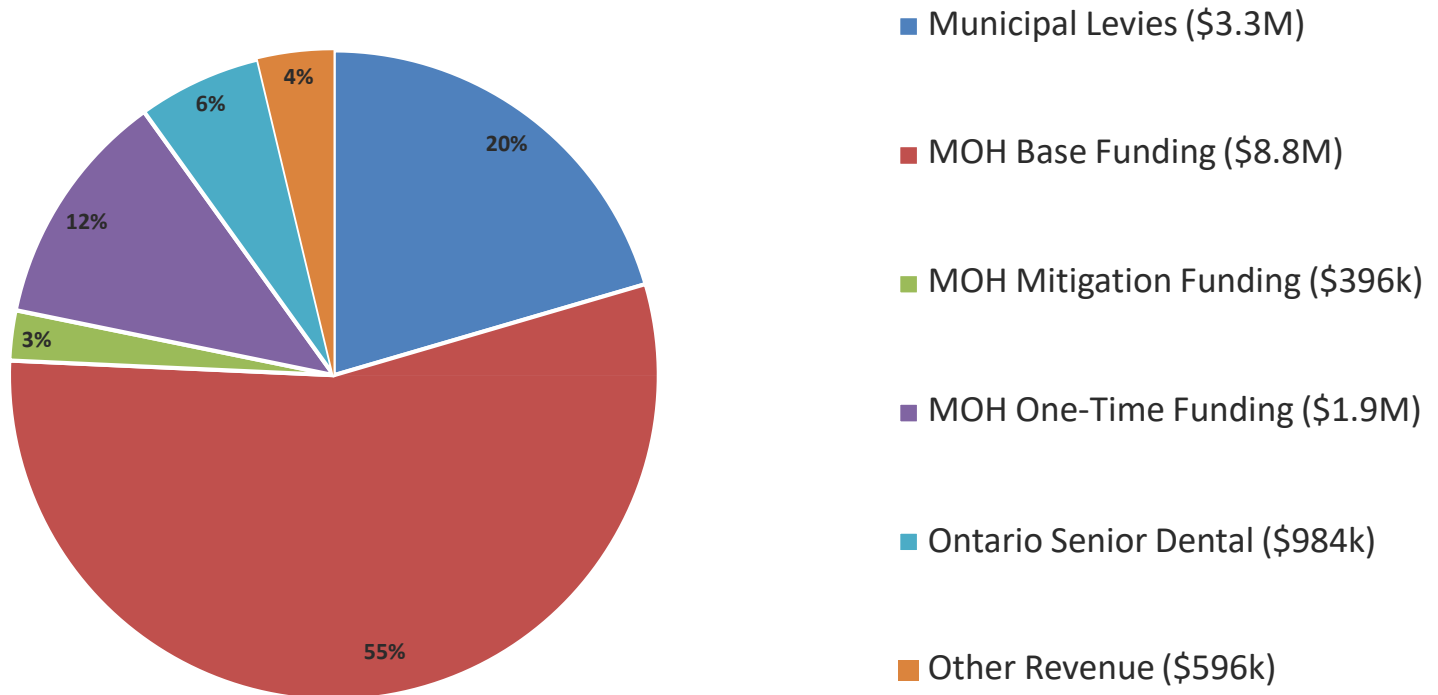
Leeds, Grenville & Lanark District

HEALTH UNIT

Your Partner in Public Health

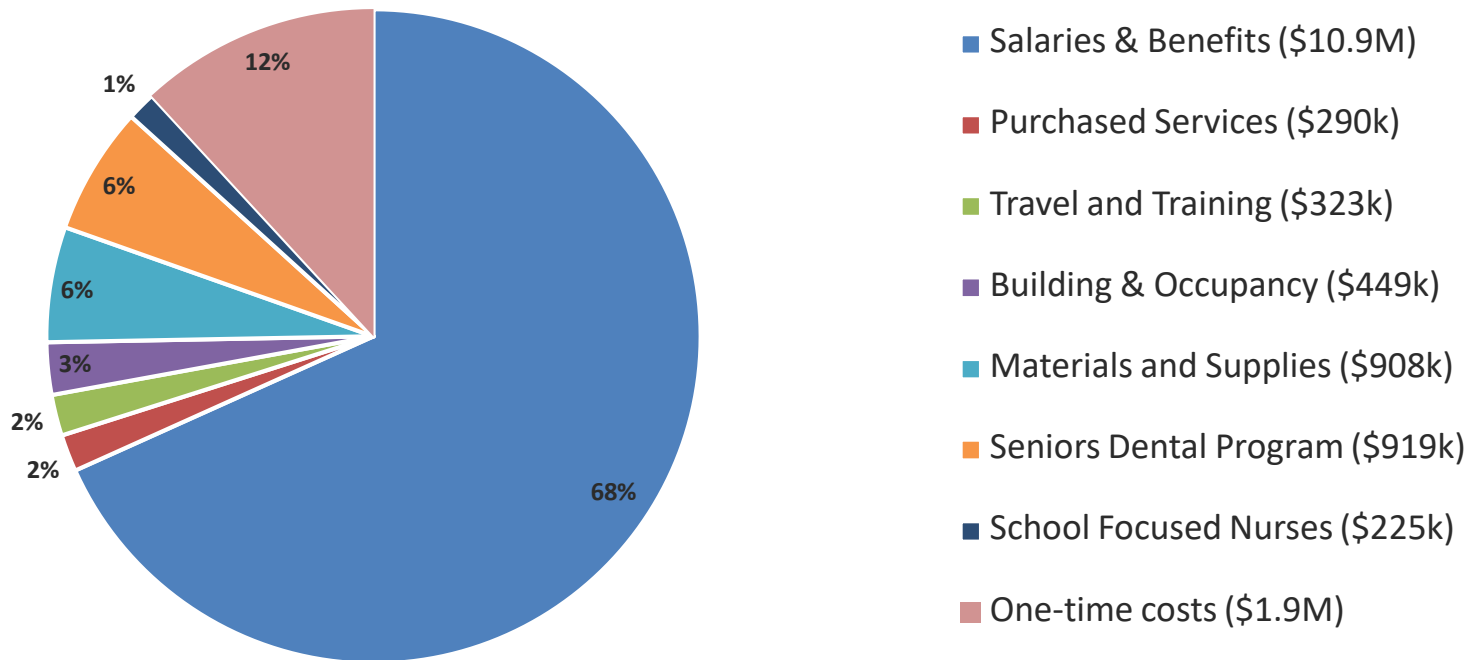
Finance - Highlights

2023 OPHS Revenues (unaudited)



Finance - Highlights

2023 OPHS Expenditures (unaudited)



Finance/Purchasing - Stats & Facts

- Total Purchase Orders = 614
- Total Contracts Signed to date = 30
- 19 RFQ's
- Tenders = 1
- Cheques Printed = 239
- EFTs Sent = 1014
- Paystubs Processed = 4447



Property/Facilities Highlights

Brockville Building

\$35k renovation to move PSL into Brockville (from BGH)

Kemptonville Building

\$233k renovation to move services to Kemptonville campus



Leeds, Grenville & Lanark District

HEALTH UNIT

Your Partner in Public Health

2022 IT KPI's

Indicator	2022	2023
Requests to Computer Support	9,344	11,884
Staff working remotely/capable of working from home	160	133
Staff cell phones	114	112
Calls to Call Centre	15,000	2,270 (shut down in July)



Leeds, Grenville & Lanark District

HEALTH UNIT

Your Partner in Public Health

Questions?



Leeds, Grenville & Lanark District

HEALTH UNIT

Your Partner in Public Health