



Public Health and Municipal Collaboration

June 21, 2018

Presenters:

Jane Lyster, Director of Community Health Protection

Elaine Murkin, Manager of Chronic Disease & Well-being

Naomi Giuliano, Health Promotion Consultant – Healthy Environments



Public Health Mandate

Healthy Environment Program Standard

- “The board of health shall engage in community and multi-sectoral collaboration with municipal and other relevant partners to promote healthy built and natural environments.”

[Healthy Environments and Climate Change Guideline, 2018](#)



Leeds, Grenville & Lanark District

HEALTH UNIT

Your Partner in Public Health

What We Do Now

- Healthy Community Vision
- Healthy food options at recreation centres
- Amending municipal RFPs for food vendors and vending machines
- Municipal Drug Strategies
- Active transportation
- Sewage & site permits
- Land severances



What we do now

- Heat communication – cold communication
- Vector monitoring – ticks, mosquitoes
- Review development proposals with potential positive or negative human health effects as early as possible
- Rabies clinics in some municipalities
- Participate in animal control issues
- Vector borne disease re: municipal staff protection



What we do now

- 19 municipalities receive Part VIII Land Control Services – yearly dash- board of services
 - **Sewage** permits, severances, zoning changes, subdivision plans etc.

All municipalities:

- **Safe Water** – responding to a water quality issue
- **Municipal Designated Beaches** – conduct inspections and beach water quality monitoring weekly for the swimming months
- **Emergency Preparedness** – participate in table tops and in the real occasion of municipal/county emergencies
- **Health Hazards** - investigation and follow up of incidents with human health impact

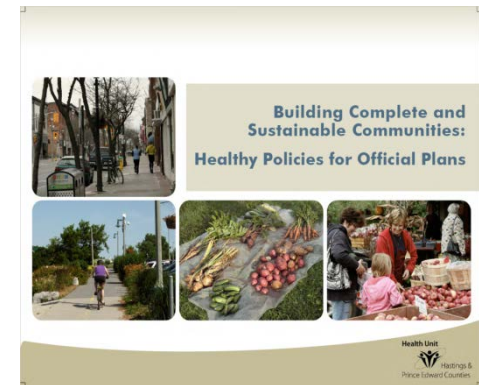
What we do now

- Discuss building code issues for premises with public health significance and/or regulatory
- Discuss potential health hazards such as abandoned waste disposal sites, contaminated aquifers, impacts on private water systems within townships, etc.
- Inspect many facilities within municipal boundaries; food premises, tanning salons, personal service settings, day care, arenas, small drinking water systems, etc. have these premises mapped on GIS map if a copy is desired for a municipality.
- Harm Reduction relationships with police and fire regarding – needle disposal, etc. naloxone kits and other harm reduction related activities.



New Municipal Work

- Liaison with community-based Public Health Nurses
- Process to review Official plans
- Health Impact Assessments
- Assessing Climate Change impact and mitigation strategies in LGL



Leeds, Grenville & Lanark District

HEALTH UNIT

Your Partner in Public Health

Into the Future the Ministry Directs Us

To:

- Consider healthy built and natural environments (in partnership with municipalities - property standards; housing conditions; temperature control in rental housing; pest and vermin control; restrictions on open fires in residential areas; restricting wood burning stoves)
- Health Impact Assessment – a more systematic, scientific approach to issues, development, to support Public Health decisions, formal record to submit to municipalities, and for future consideration.
- Collaborate with municipalities on Climate Change – reducing exposures to climate related environmental health hazards in the community – comments on regional and local official plans; land use compatibility; climate change impacts; options for adaptation



Into the Future the Ministry Directs Us

To:

- Consider Healthy Environment strategies
- Respond to Environmental Exposures



Leeds, Grenville & Lanark District

HEALTH UNIT

Your Partner in Public Health

Health Unit Contacts – United Counties

Municipality	Public Health Nurse	Public Health Inspector	Land Control
Athens	Kaitlin Patterson	Ben Mac Neil	Mark Green
Augusta	Jennifer Labelle	Joyce Mac Neil	Mark Green
Brockville	Jennifer Labelle	Joyce Mac Neil Gary MacKenzie Gabriel Moussa	Mark Green
Edwardsburgh/Cardinal	Jennifer Labelle	Joyce Mac Neil	Mark Green (Debbie Steele)
Elizabethtown/Kitley	Jennifer Labelle	Kim McCann	Mark Green
Front of Yonge	Jennifer Labelle	Melissa O'Brien	Mark Green
Gananoque	Kimberley Marshall	Melissa O'Brien	Mark Green
Leeds & The 1000 Islands	Kimberley Marshall	Ben Mac Neil	Mark Green
Merrickville/Wolford	Joanne Desormeaux	Ben Mac Neil	Mark Green (Debbie Steele)
North Grenville	Joanne Desormeaux	Debbie Steele	Mark Green (Debbie Steele)
Prescott	Jennifer Labelle	Gabriel Moussa	Mark Green
Rideau Lakes	Kimberley Marshall	Gary MacKenzie	Nancy Carpenter
Westport	Kimberley Marshall	Jennifer Bricker	Nancy Carpenter

Health Unit Contacts – Lanark County

Municipality	Public Health Nurse	Public Health Inspector	Land Control
Beckwith	Bonnie Schnittker	Teresa Clow	Nancy Carpenter
Carleton Place	Bonnie Schnittker	Andrew Dunn Jennifer Bricker	Nancy Carpenter
Drummond North Elmsley	Alexis Green	Sarah Kondert	Nancy Carpenter
Lanark Highlands	Danielle Shewfelt	Jennifer Bricker Andrew Dunn	Nancy Carpenter
Mississippi Mills	Danielle Shewfelt	Andrew Dunn	Nancy Carpenter
Montague	Kaitlin Patterson	Teresa Clow	Nancy Carpenter
Perth	Alexis Green	Sarah Kondert Lisa Chen	Nancy Carpenter Lisa Chen
Smiths Falls	Kaitlin Patterson	Sarah Kondert Lisa Chen	Nancy Carpenter Lisa Chen
Tay Valley	Alexis Green	Jennifer Bricker	Tay Valley

Moving Forward

- What is the best way for the liaison PHN's to connect with each municipality?
- What collaborative work could be done with municipalities?

